

Embossing on Gourds

Bill Tarlton

Practice Pigment Powder On Shard

- **Pick Area to Color – Make A Rectangle Box With Your Burner**
- **Apply Heat Activated Glue Inside the Box (Either Black or Clear)**
- **Heat Area With Heat Gun (Sheen Will Fade)**
- **Apply Powder With a Brush – Tap Off Excess Powder**
- **Use a Clean Brush to Remove Powder From Outside the Lines**
- **The Color is Now Set and Ready to Seal**

Practice Embossing Powder on Shard

- **Define the Area**
 - **Apply Heat Activated Glue To Select Area**
 - **Apply Powder (Place Paper Under Work Area To Capture Excess)**
 - **Remove Excess From Outside the Lines**
 - **Apply Heat (More Heat Equals Larger Bubbles)**
 - **Remove Excess With Hobby Knife**
-
- **Notes: Cloisonne Powder Will Bubble Higher Than Embossing Powder**
 - **Hide Bad Stains and Blotches With Cloisonne**
 - **Great For Rims and Other Embellishments**
 - **Can Be Double Applied to Create More Dimension**
 - **Powder Colors Can Be Mixed to Attain Desired Outcome**
 - **Clear Glue and Clear Powder Will Reflect the Base Color**

Pick Your Subject – Transfer it to the Gourd

You Can Do Carving Anytime After This Class
Do Not Emboss this Area If You Are Carving Later

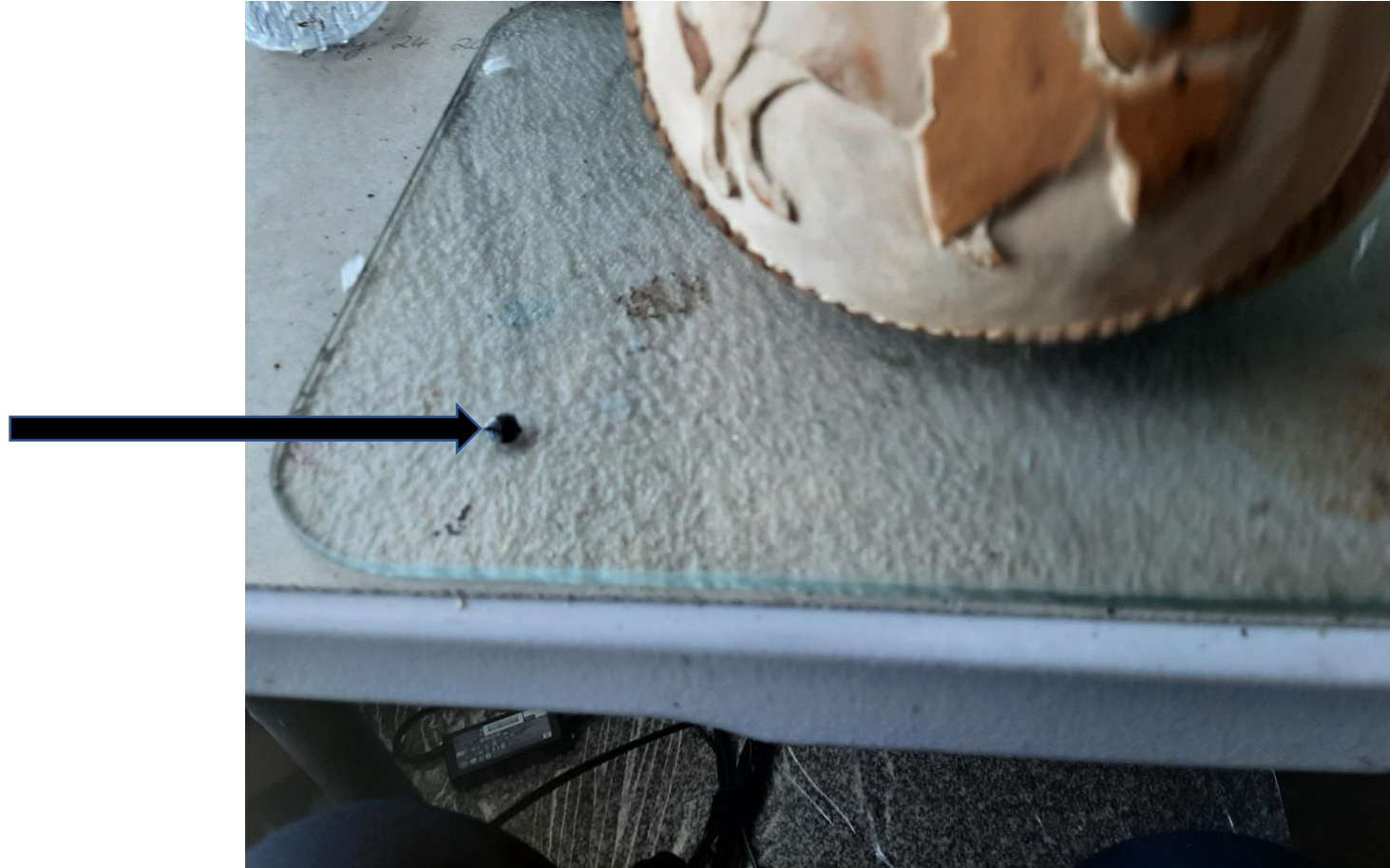


Burn Your Lines

- Set Your Burner to a Medium Heat (Do Not Make Real Dark Lines)
- Burn Over the Transfer Lines of Your Subject

Heat Activated Glue – Only Takes a Drop or Two

Glue Comes in Black or Clear



Pick The Areas To Emboss, Apply Glue
This Took 1.5 drops of Glue



Applying Embossing Powder

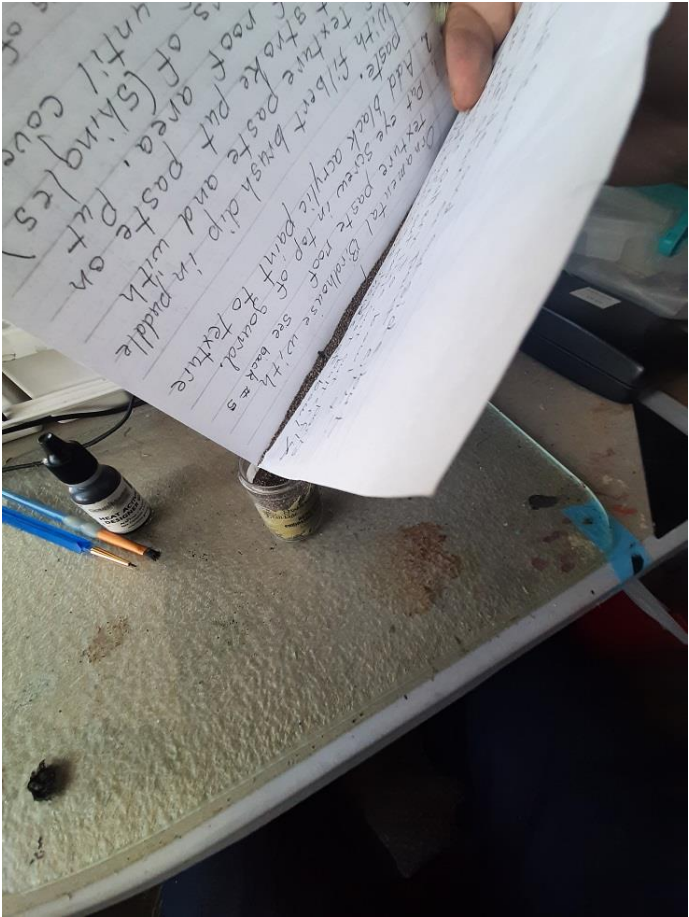
Choose Color (Remember, You Can Combine Two or More Colors)

Place Paper Under Project

Use Brush or Sprinkle With Fingers – Do not touch brush to glue, just tap the shaft and powder will fall onto the glue area



Tap the Gourd To Remove Excess Powder
Tap the Brush To Remove All Powder
Return Excess Powder To Container

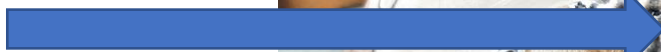


Apply Heat To The Embossed Area – More Heat Equals Bigger Bubbles – See Next Slide



Heat Effects

More Heat



Less Heat

Use Layering to Achieve More Dimension

- Add Glue and Additional Powder Right on Top of the Desired Area



If You Carve, Seal the Carved Area Before Applying Ink or Paint



Make A Story Board For Future Reference

